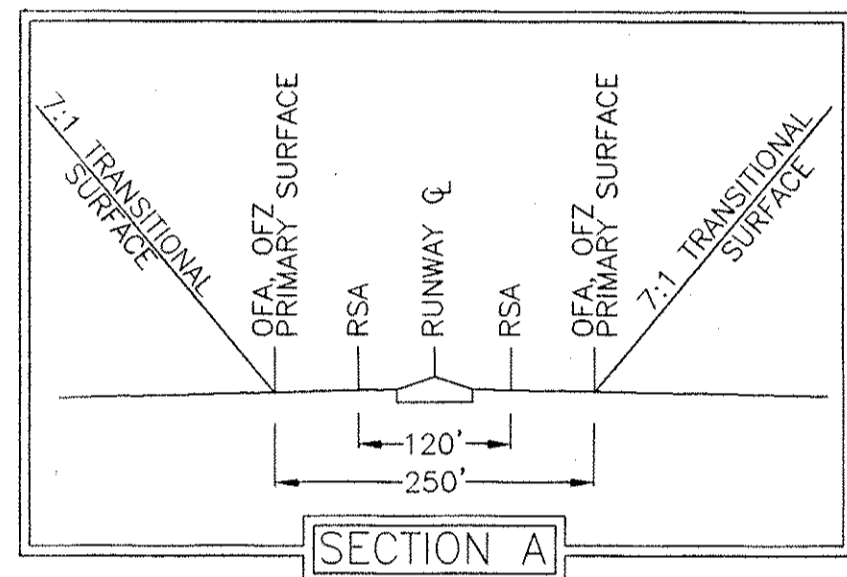


GENERAL NOTES:

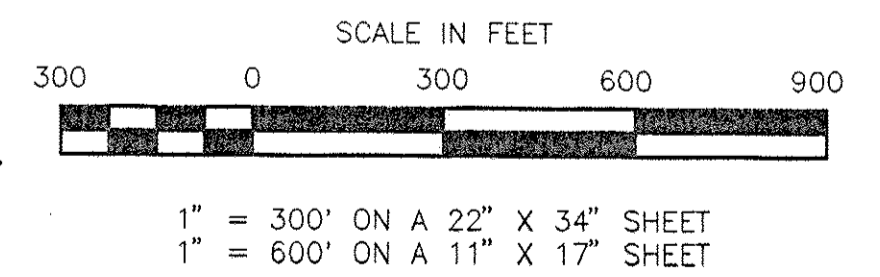
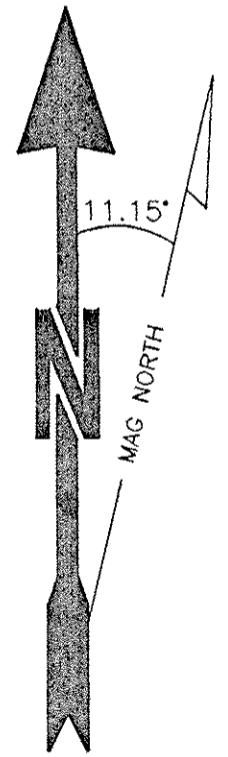
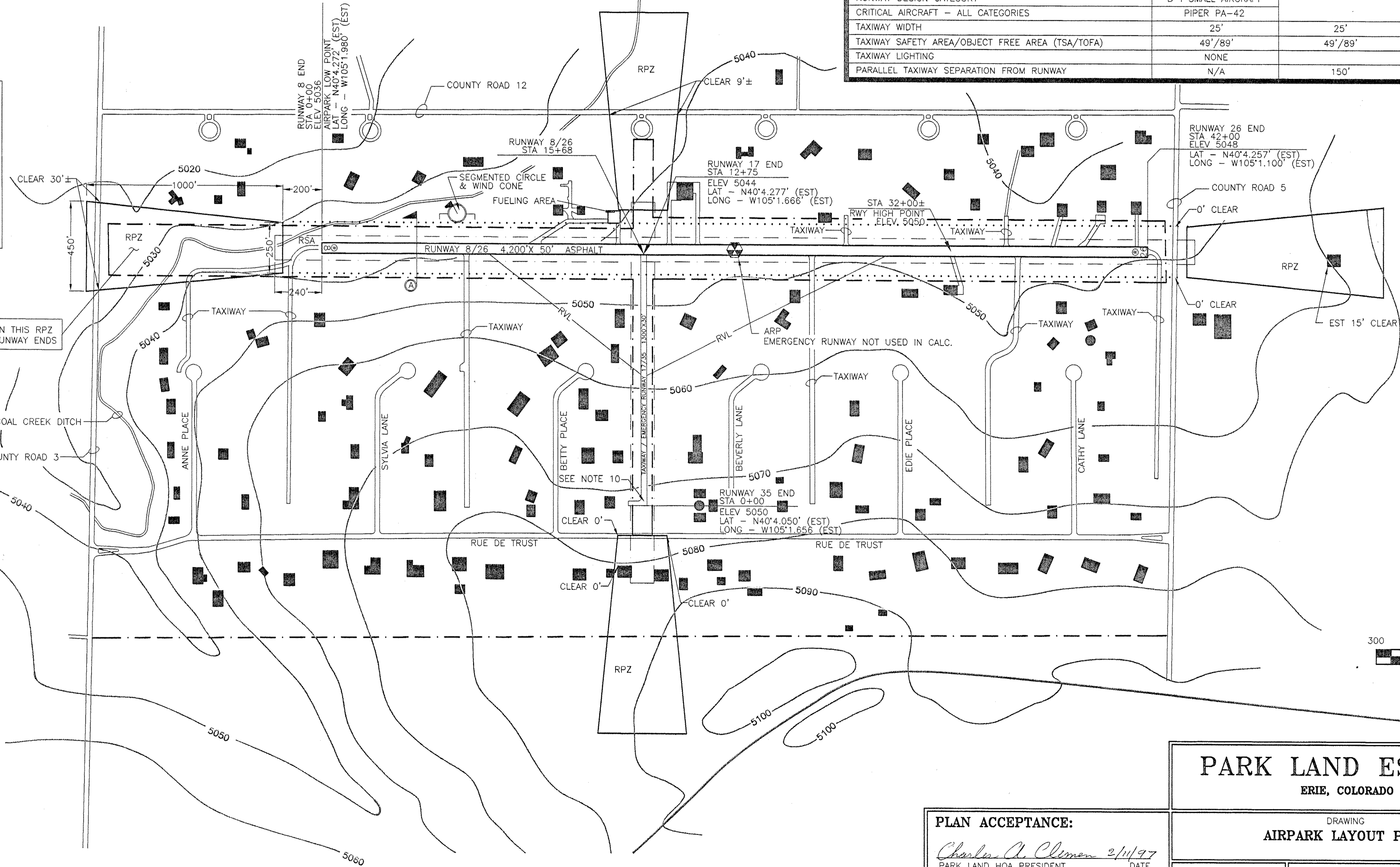
1. BASE DATA FOR THIS PLAN WAS TAKEN FROM AN AERIAL PHOTOGRAPH (1995), USGS TOPOGRAPHIC MAPS (ERIE 1979), SITE VISITS, AND OTHER RELEVANT INFORMATION.
2. ANY CHANGES TO THE AIRPORT, INCLUDING HANGAR AND BUILDING CONSTRUCTION IN THE AIRPORT VICINITY MUST BE REPORTED TO THE FAA VIA FORM 7460-1 NOTICE OF PROPOSED CONSTRUCTION AT AIRPORTS.
3. ALL ELEVATIONS ARE MSL AND INDICATED LENGTHS ARE IN FEET. RUNWAY ELEVATIONS ARE PLANNED.
4. THIS DRAWING IS FOR PLANNING PURPOSES ONLY. ELEVATIONS AND EXACT LOCATIONS SHOULD NOT BE ASSUMED. THIS DRAWING SHOULD NOT BE USED FOR CONSTRUCTION.
5. DESIGN STANDARDS ARE FROM FAA ADVISORY CIRCULAR 5300-13 (CHANGES 1-4).
6. CLEAR DESIGNATIONS UNDER APPROACH SURFACES INCLUDE FAR PART 77 BUFFERS.
7. RUNWAY 17/35 IS FOR EMERGENCY USE ONLY. NORMAL USE IS A TAXIWAY TO RUNWAY 8/26.
8. CRITICAL AIRCRAFT FOR THE B-I CATEGORY AND THIS AIRPORT IS THE PIPER PA-42-720 AIRPLANE. PIPER PA-42-720 HAS: A 47.7' WINGSPAN; GROSS WEIGHT OF 11,950; APPROACH SPEED OF 116 KTS.
9. BETWEEN RUNWAYS - LINE OF SIGHT IS NOT MET.

AIRPORT DATA	EXISTING	FUTURE
AIRPORT NPIAS ROLE	PRIVATE	SAME
AIRPORT ELEVATION	5050' MSL (EST)	SAME
MEAN MAX TEMP - HOTTEST MONTH	88.0° F	SAME
AIRPORT AND TERMINAL NAVAIDS	NONE	NONE
VISUAL APPROACH AIDS	NONE	RWY 8/26 -PAPI
MAGNETIC VARIATION (DEN SECTIONAL 1996)	11°15'	APPROX -1.5 MIN/YR
PERCENT WIND COVERAGE (10KTS/13KTS)	UNKNOWN	SAME
AIRPORT REFERENCE POINT (ARP)	LAT: N 40° 04' 10" LONG: W 105° 01' 59"	SAME
AIRPORT REFERENCE CODE (BOTH RUNWAYS)	B-I SMALL AIRCRAFT	SAME

RUNWAY DATA	RUNWAY 8/26 (PRIMARY)		RUNWAY 17/35 (XWIND)	
	EXISTING	FAA DESIGN STD	FUTURE	EMERGENCY ONLY
RUNWAY LENGTH	4,200'	4,610'	SAME	1,300'
RUNWAY WIDTH	50'	60'	SAME	30'
STRENGTH	8,000 SWG	12,500 SWG	12,500 SWG	12,500 SWG
SAFETY AREA WIDTH/LENGTH BEYOND RWY ENDS (RSA)	120'/240'	120'/240'	SAME	120'/240'
OBSTACLE FREE ZONE WIDTH/LENGTH BEYOND RWY ENDS (OFZ)	250'/200'	250'/200'	SAME	250'/200'
OBJECT FREE AREA WIDTH/LENGTH BEYOND RWY ENDS (OFA)	250'/240'	250'/240'	SAME	250'/240'
EFFECTIVE GRADIENT (IN PERCENT)	0.004%	LESS THAN 2%	SAME	
PERCENT WIND COVERAGE (10KT/13.5KT)	??%/??%	> 95% W/1 RWY	SAME	94.37% (10.5KTS)
TYPE OF APPROACH	VISUAL		SAME	VISUAL
MAXIMUM ELEVATION ABOVE MSL	5050' (ESTIMATE)		SAME	5050'(EST)
LIGHTING	LIRL		SAME	NONE
MARKING	BASIC	BASIC	SAME	NONE
VISUAL APPROACH AIDS	NONE		SAME	NONE
APPROACH SURFACES SLOPE (ACTUAL)	R8- 20:1 R26- 0:1	R8-20:1 R26-20:1	SAME	R17- 20:1/R35- 0:1 R17 20:1/R35- 20:1
APPROACH SURFACE DIMENSION (INNER/OUTER/LENGTH)	R8-250'/1,250'/5,000' R26-250'/1,250'/5,000'	R8-250'/1,250'/5,000' R26-250'/1,250'/5,000'	SAME	R17-250'/1,250'/1,000' R35-250'/1,250'/1,000'
PART 77 PRIMARY SURFACE WIDTH/LENGTH BEYOND RWY ENDS	250'/200'	250'/200'	SAME	250'/200'
RUNWAY PROTECTION ZONE DIMENSION (INNER/OUTER/LENGTH)	R8-250'/450'/1,000' R26-250'/450'/1,000'	R8-250'/450'/1,000' R26-250'/450'/1,000'	SAME	R17-250'/450'/1,000' R35-250'/450'/1,000'
PAVEMENT TYPE	ASPHALT		SAME	ASPHALT
RUNWAY DESIGN CATEGORY	B-I SMALL AIRCRAFT		SAME	B-I SMALL AIRCRAFT
CRITICAL AIRCRAFT - ALL CATEGORIES	PIPER PA-42		SAME	PIPER PA-42
TAXIWAY WIDTH	25'	25'	SAME	N/A
TAXIWAY SAFETY AREA/OBJECT FREE AREA (TSA/TOFA)	49'/89'	49'/89'	SAME	N/A
TAXIWAY LIGHTING	NONE		SAME	NONE
PARALLEL TAXIWAY SEPARATION FROM RUNWAY	N/A	150'	SAME	N/A



DIMENSIONS SHOWN THIS RPZ TYPICAL OF ALL RUNWAY ENDS



ABBREVIATIONS

ARP	AIRPORT REFERENCE POINT
BLD	BUILDING
BRL	BUILDING RESTRICTION LINE
CL	CENTERLINE
DT	DISPLACED THRESHOLD
ELEV	ELEVATION
FAA	FEDERAL AVIATION ADMINISTRATION
GA	GENERAL AVIATION
GPS	GLOBAL POSITIONING SYSTEM
IFR	INSTRUMENT FLIGHT RULES
ILS	INSTRUMENT LANDING SYSTEM
MSL	MEAN SEA LEVEL
NPI	NONPRECISION INSTRUMENT (APPROACH)
OFA	OBJECT FREE AREA
OFZ	OBSTACLE FREE ZONE
PAPI	PRECISION APPROACH PATH INDICATOR
REIL	RUNWAY END IDENTIFIER LIGHTS
RPZ	RUNWAY PROTECTION ZONE
RSA	RUNWAY SAFETY AREA
RVL	RUNWAY VISIBILITY LINE
STA	STATION
TBR	TO BE REMOVED
TSA	TAXIWAY SAFETY AREA
ULT	ULTIMATE
VFR	VISUAL FLIGHT RULES

PARK LAND ESTATES ERIE, COLORADO		REVISIONS / DATE
PLAN ACCEPTANCE: <i>Charles A. Clemens</i> 2/11/97 PARK LAND HOA PRESIDENT DATE		
DATE: JAN 1997	DWG NO: PARKALP	DRW/CHK BY: REP/REP
		SHEET 2 OF 4